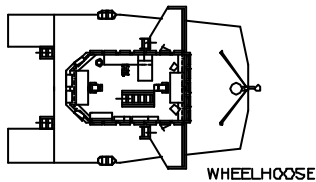




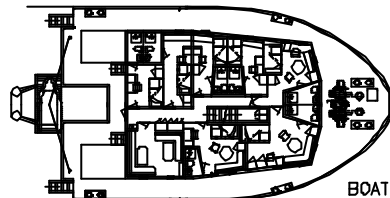
Oil recovery anchor handling tug supply vessels

AILETTE

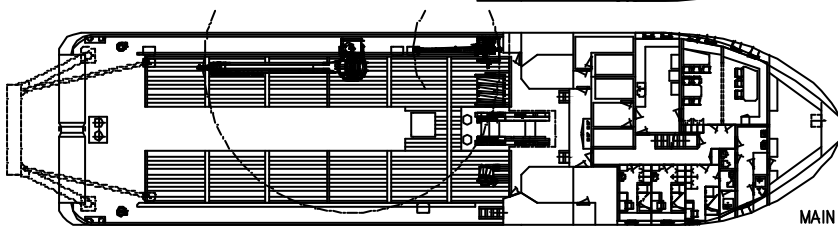
64 Metric ton bollard pull
85 Metric ton line pull winch



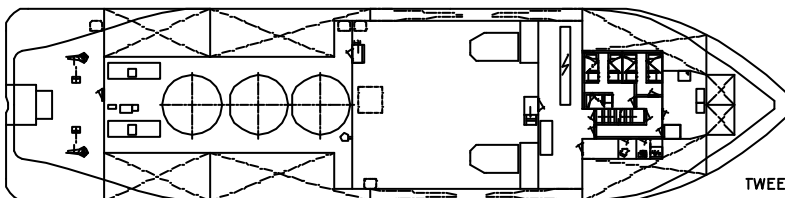
WHEELHOUSE



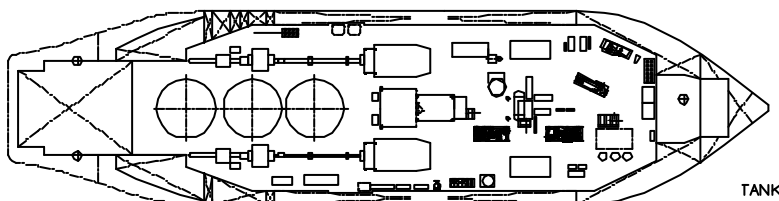
BOAT DECK



MAIN DECK



TWEEN DECK



TANK TOP

This vessels built on an Ulstein design offer the charterers a great versatility to meet all the requirements of the offshore industry.

This anchor handling tug supply vessel have a full-skimming capability using the French Navy equipment TRANSREC 250, sweeping arm, and have a large recovered oil holding capacity (500 m³).

It is fitted with a Fi-Fi system and a waterfall double drum hydraulic winch.

« Photo: Marine nationale ».

08-03-2006



Oil recovery anchor handling tug supply vessels

AILETTE

5,280 bhp

MAIN CHARACTERISTICS

Length overall:53.00 m.
Breadth moulded:13.00 m.
Depth main deck:6.75 m.
Max draft:4.50 m.
Deadweight at max draft:1,002 t.
Bollard pull:64 t.
Gross tonnage:1,000

REGISTRATION

Type:Anchor handling tug supply vessel. ULSTEIN UT 711.
Owner:Bourbon Offshore.
Delivery:1982
Builder:Constructions mécaniques de Normandie (France).
Flag:French.
Classification: Bureau Veritas, 1 3/3E ✚ Supply vessel, oil recovery ship, deep sea, DP1 MA-TA, ✚ MACH.

PERFORMANCE

Consumption: 22 m³/day at 14.5 knots (maxi speed).
14 m³/day at 12 knots (economic speed).

ACCOMMODATION

- Fully air-conditioned.
- Accommodation for 22 persons composed of:
 - 8x single cabins, 2x 2 men cabins, 1x 4 men cabins, 1x 6 men cabins.
- 2 mess rooms, 1 day room, galley, provision rooms, stores, laundry, 1 hospital.

PROPULSION - MACHINERY

- **Main engines:** 2x BERGEN NORMO KVM B12 (2x 2,640 hp).
- **Propellers:** 2x NORMO/HJELSET, variable pitch in kort nozzles.
- **Gearbox:** VOLDA/LIAAEN, reduction 3.66 : 1.
- **Shaft generators:** 2x 500 kVA, 380V 50 Hz.
- **Auxiliary generators:** 2x 185 kVA, 380V 50 Hz driven by Diesel GM engines.

THRUSTERS

- **Bow tunnel thrusters:** 2x ULSTEIN type 90 TV controllable pitch driven by a SIEMENS electric motor (500 hp).

TOWING/ANCHOR HANDLING WINCH

- **Main winch:** 1 double drum waterfall hydraulic winch, BRATTVAAG type SL 85 W/2 t.
 - Drum capacity: 800 m of 2" wire.
 - Brake holding load: 150 t.
 - Max Pull: 85 t.
 - Remote controlled from wheelhouse.
- **Anchor winch:** Hydraulic BRATTVAAG type B8 MA 10.
 - Anchors: 2x DANFORTH 1,440 kg,
 - Cables: 17x16 Schackles (total 907 m) x 32 mm, Q3 chain.
- **Stern roller:** 1x 250 mt SWL,
Dia: 1,000 mm, Length: 1,800 mm.
- **Towing pins:** 1 pair.
- **Shark jaws:** 1.
- **Tugger:** 1x 5 t. Hydraulic BRATTVAAG.
- **Capstans:** 2x 5 t Hydraulic BRATTVAAG type CM220205 at stern.
- **Deck crane:** 23 t @ 7 m./4 t @ 20m, HYDRAMARINE, telescopic type.

CAPACITIES & PUMPS

Cargo deck area:260 m² (26x10m) @ 5.0 t/m².
Deck cargo :480 tons @ 0.9 m above deck.
Potable & DW:765 m³ - 2x 150 m³/h at 6 bars.
- 1x 100 m³/h at 6 bars.
Fuel oil:796 m³ - 1x150 m³/h at 6 bars.
Dispersant:20 m³.
Foam:10 m³.
Bulk tanks: (3x 45.33 m³).....135 m³ - 2 air compressors,
each 660 m³/h at 420 bars.
FO/ORO tanks:500 m³ - 2x 150 m³/h.
Refrigerated storage: Cooler.....11 m³.
Freezer.....6.60 m³.

ELECTRONICS

- 1 radar RACAL DECCA bridge master 252C,
- 1 radar FURUNO FR 2100 serie 2120,
- 1 echo-sounder SIMRAD type ED 1621,
- 2 gyrocompasses SG BROWN MERIDIAN,
- 1 autopilot ANSCHUTZ,
- 1 console GMDS Sailor type HC 4500,
- 1 DGPS,
- 1 GPS,
- 2 VHF,
- direction finders: 1 TAIYO TDL 1100,
1 VHF POLARIS NC 7100,
- 1 Auto-alarm.

SPECIAL EQUIPMENT

- **Life saving arrangement:**
 - 1 x 10 Persons semi-rigid Zodiac with 80 hp outboard motor,
 - 1 x 6 Persons Zodiac with 25 hp outboard motor,
 - Inflatable life rafts with equipment, 2x 12 Persons,
 - Lifebuoys, life Jackets.
- **Fi-Fi system :** 600 m³/h.
 - 2 water monitor 300 m³/h each.
 - Pump: 1x 600 m³/h.
 - Foam tank: 5 m³.

All particulars believed to be correct but not guaranteed.

Bourbon Offshore

148, rue Sainte - 13007 Marseille - France

Phone +33 (0)4 91 13 08 00 - Fax +33 (0)4 91 13 08 61

www.bourbon-online.com - E-mail: bourbon-offshore@bourbon-online.com